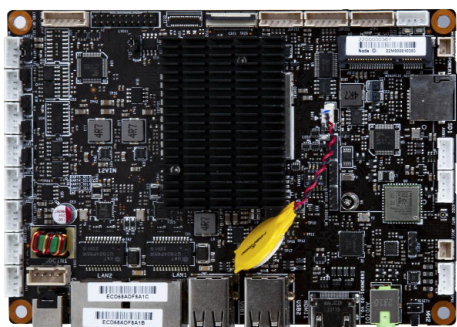


JES-N93I

NXP i.MX 93 Industrial Embedded SBC

JWIPC's JES-N93I is an Arm-based 3.5" Single Board Computer powered by industrial tier NXP I.MX93 SoC, which includes 2x Arm Cortex-A55 cores, 1x Arm Cortex-M33 real-time processor and Arm Ethos™ U-65 microNPU. It supports LVDS, MIPI-DSI or HDMI display and provides rich I/O resources such as 2x GbE (1 w/TSN), 2x CAN FD, 6x USB and 6x COM. It also features an optional on-board WiFi+BT module and Mini PCIe with Micro SIM card slot for 4G expansion. Designed for field operation in industrial environments, JES-N93I can withstand ambient temperatures between -40 and +85 °C and 10~90% relative humidity non-condensing.

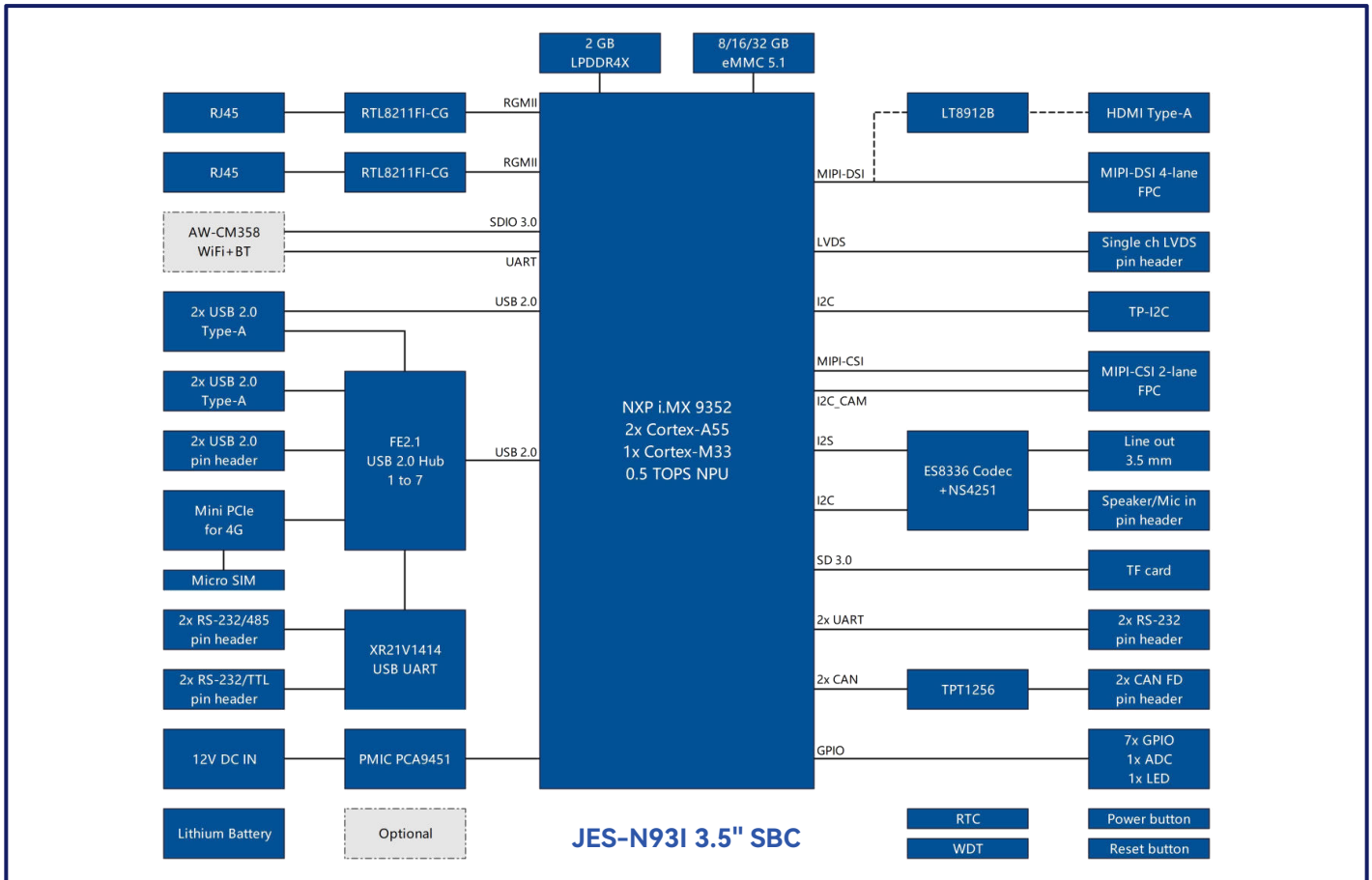


- Arm-based 3.5" Single Board Computer
- Industrial tier NXP i.MX 9352 SoC up to 1.7 GHz
- 2x Cortex-A55 + 1x Cortex-M33 + 0.5 TOPS NPU
- On-board 2GB LPDDR4X + 8/16/32GB eMMC 5.1
- Display: 1x HDMI/MIPI-DSI, 1x LVDS
- I/O: 2x GbE (1 w/TSN), 2x CAN FD, 6x USB, 6x COM
- On-board WiFi+BT module + Mini PCIe for 4G
- Supports -40~85°C operating temperature

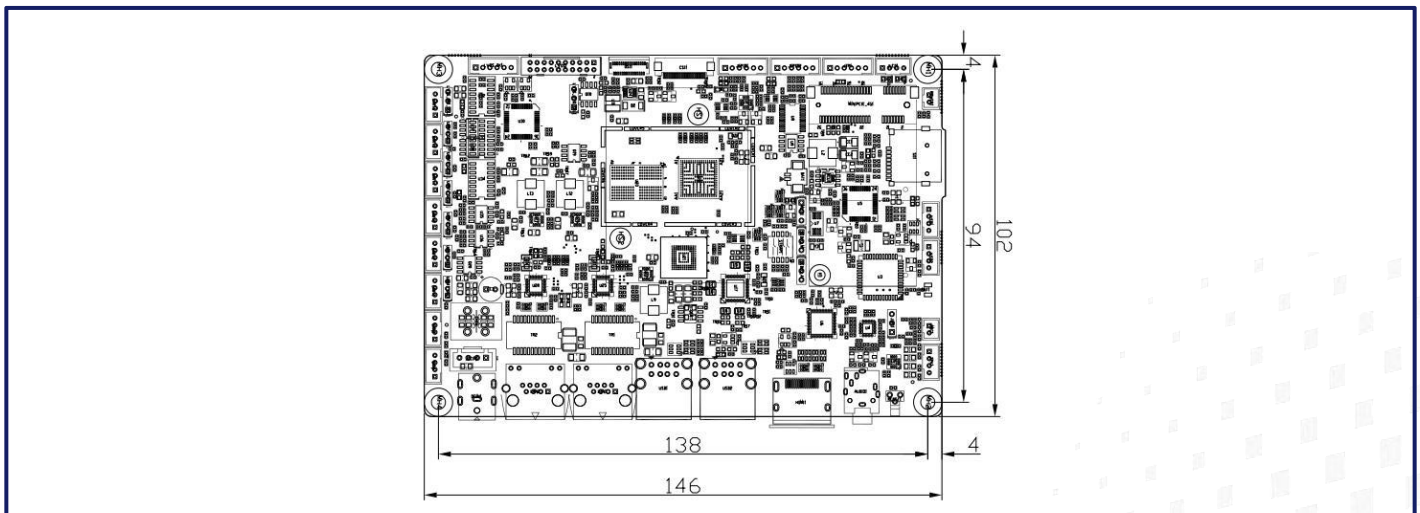
Specifications

CPU	NXP i.MX 9352, Dual core Cortex-A55 processors up to 1.7 GHz, 64-bit Arm® v8.2-A architecture
MCU	Arm Cortex-M33 up to 250 MHz for real-time and low-power processing
NPU	0.5 TOPS Neural Network performance
Memory	On-board 2GB LPDDR4X
Flash Memory	On-board 16GB eMMC 5.1 for OS (8GB/32GB optional)
Ethernet	2x 10/100/1000 Mbps, 1 supports Ethernet QoS with TSN, supports 802.1Qbv Enhancements to Scheduling Traffic, 802.1Qbu Frame preemption and Time Based Scheduling
WiFi	On-board AW-CM358 module (optional), supports IEEE 802.11a/b/g/n/ac WiFi with Bluetooth 5.2
5G/4G	1x Mini PCIe for 4G, 1x Micro SIM slot
Display	1x HDMI 1.4 or 4-lane MIPI-DSI, 1x Single channel LVDS Supports Dual display up to 1080p60+720p60
Camera Input	1x 2-lane MIPI-CSI
Audio	1x 3.5mm Line out, 1x Speaker, 1x Mic in
USB	4x USB 2.0 Type-A, 2x USB 2.0 pin header
COM	2x 2-wire RS-232/RS-485, 2x 2-wire RS-232/TTL, 2x 2-wire RS-232
CAN	2x CAN-FD
TF Card	1
I2C	1x TP-I2C
GPIO	7x 3.3V GPIO, 1x ADC, 1x LED
Power Supply	12V DC IN, PCA9451 PMIC
Form Factor	3.5 inch, 146mm x 102mm
Operating System	Yocto Linux, Android 11
Boot Options	eMMC or SD, default to eMMC
Operating Conditions	-40~85°C, 10%~90% RH non-condensing
Storage Conditions	-40~85°C, 5%~90% RH non-condensing

02 Block Diagram



03 Dimensions



04 Order Information

Part No.	SoC	Memory	Flash	LAN	WiFi	4G	Display	USB	COM	CAN	I2C	GPIO	Operating Temperature
JES-N931-ADMH0	i.MX9352 Dual core	2GB	16GB	2x 1000M	2.4/5GHz (optional)	USB 2.0	LVDS+HDMI	6	2x RS-485 4x RS-232	2	1	7	-40~85°C (-30~85°C)
JES-N931-ADLM0	i.MX9352 Dual core	2GB	8GB	2x 1000M	2.4/5GHz (optional)	USB 2.0	LVDS+MIPI-DSI	6	2x RS-485 4x RS-232	2	1	7	0~60°C